

Retail Energy Efficiency Education Program



The
Footprint
Company

CITY OF SYDNEY 

MORE INFORMATION & HELP

The Tenancy Energy Assessment Program

- Detailed assessments of retail tenancy energy consumption
 - REAP software: <https://www.reapcalculator.com/>
- Embodied carbon calculator for all building types
 - <https://footprintcompany.com/the-lca-calculators/>

Contact us for more information

The Footprint Company Pty Ltd

Phone: +61 487 888 787

Email: info@footprintcompany.com.au

www.footprintcompany.com



Grants & subsidies available

- NSW Energy Saving Scheme (EES)
 - lighting
 - heating, ventilation and air conditioning (HVAC) systems
 - motors, fans and pumps
 - compressed air systems and much more.
 - <https://energysaver.nsw.gov.au/business/discounts-and-incentives>
- Energy comparisons available at <https://www.energyrating.gov.au/>
- <http://www.energyrating.gov.au/calculator>
- How the energy star rating system works when you're buying an appliance:
<https://www.youtube.com/embed/UBi79vyL0I0?rel=>

Thank you!

- Please complete our quick participant feedback survey!

<https://www.surveymonkey.com/r/X5P7J3S>

The Footprint Company

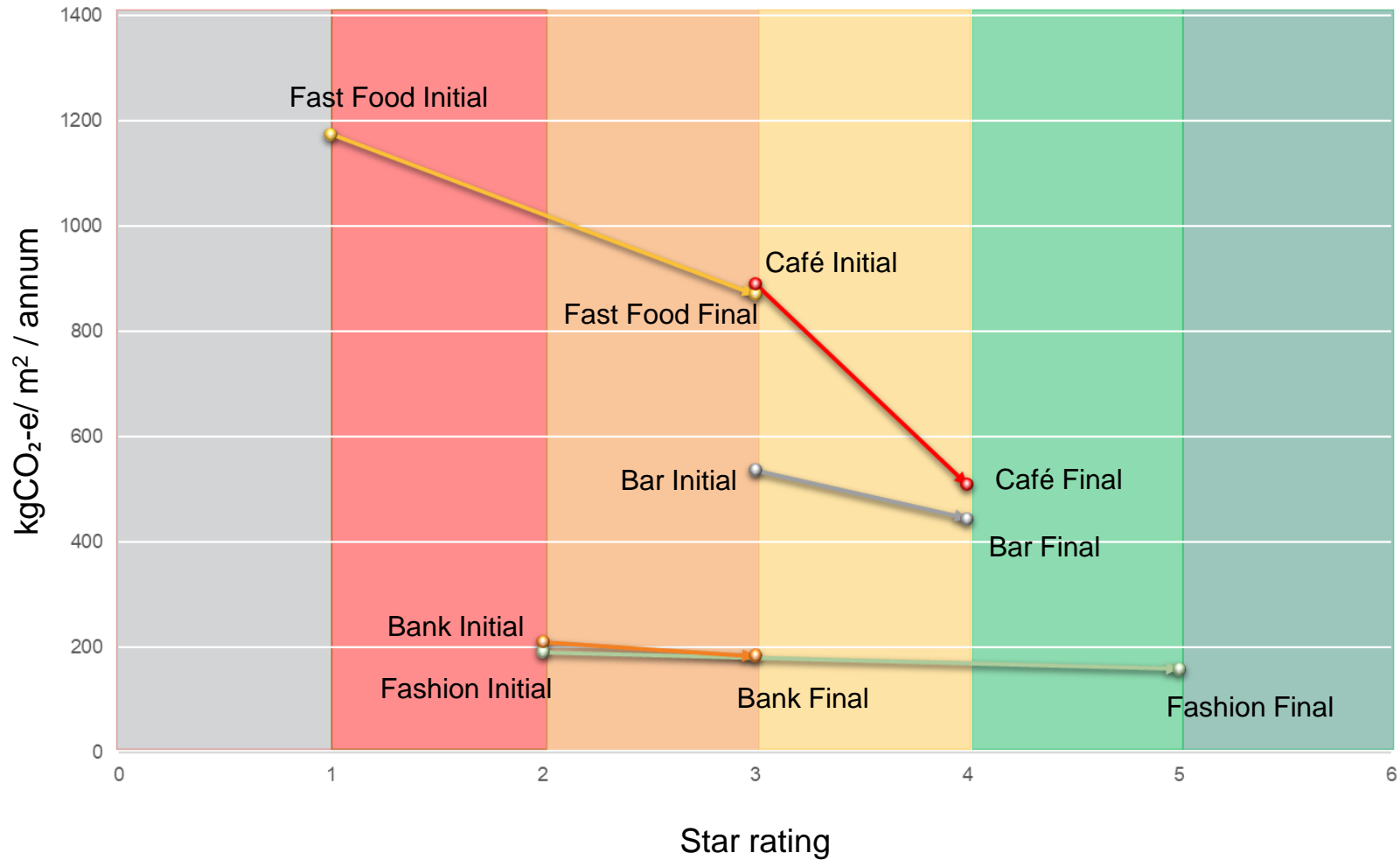
Phone: +61 487 888 787

Email: info@footprintcompany.com.au

www.footprintcompany.com

CASE STUDIES

Case Studies



15 W/m² lighting 40% better than code

Reduced the number of pieces of equipment (e.g. halved the number of printers and TV screens)

All non-essential equipment & lighting on KILL circuit for OFF out of hours

Replaced hot water unit and boiling water unit with one instantaneous hot water unit

High star rated fridge & TV installed

Our ATMs Are Open 24/7. Bank here all day, every day.

st george

Image c/o Lend Lease

6 W/m² lighting 70% better than code.

Removal of surplus equipment

All non-essential equipment & lighting on KILL circuit or OFF out of hours

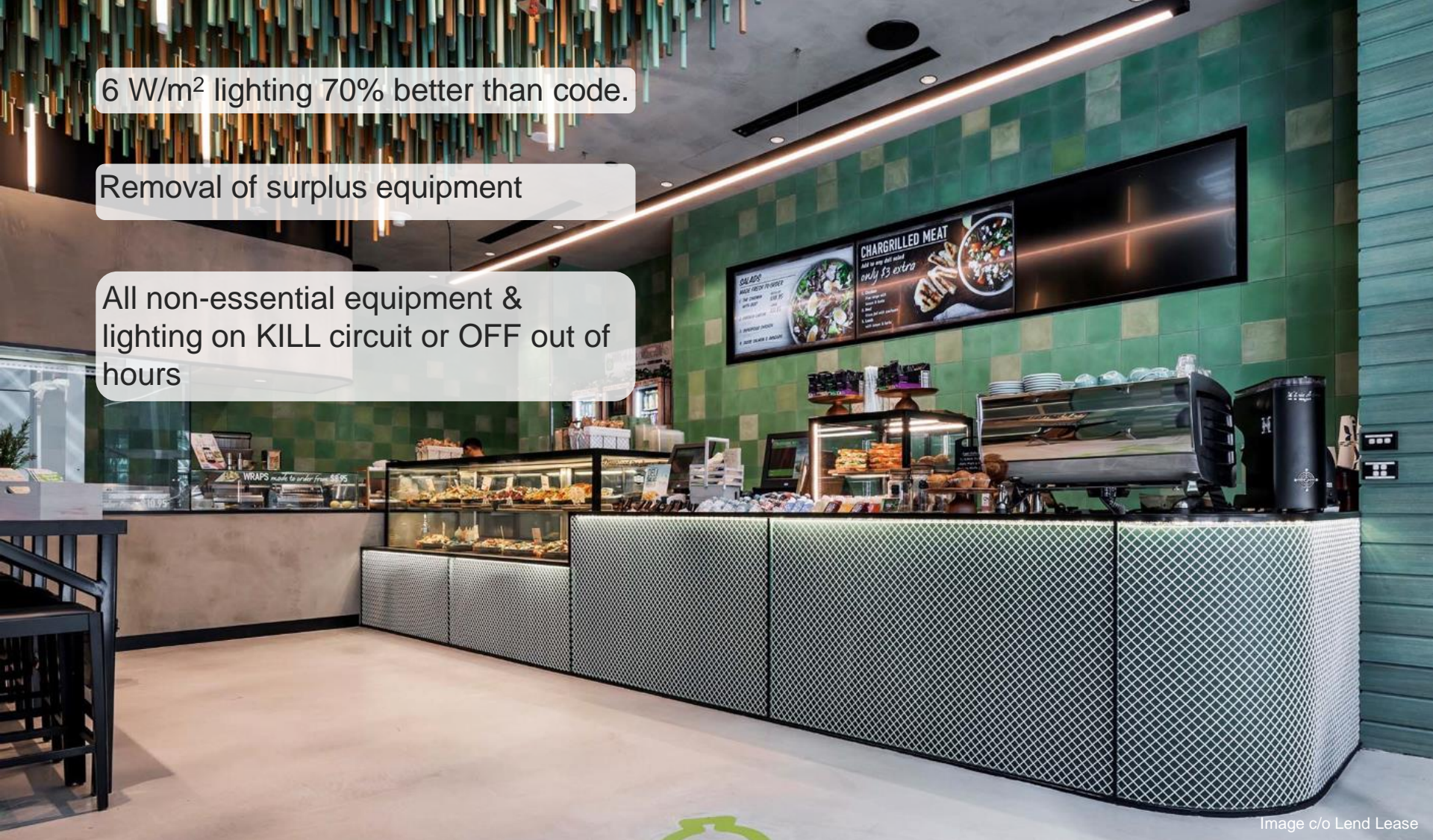


Image c/o Lend Lease



**Operating Carbon
Avoided
1,748 kg CO₂/a**

**Operating Cost
Avoided
~\$2,697 / 5 years**

10 W/m² lighting 50% better than code.

Design prioritises natural lighting

Light coloured finishes

Eliminate excess equipment



Image c/o Lend Lease



**Operating Carbon
Avoided
2,418 kg CO₂/a**

**Operating Cost
Avoided
~\$3,100 / 5 years**

6 W/m² lighting 70% better than code.

All non-essential equipment & lighting on KILL circuit or OFF out of hours

Switched key kitchen equipment from electric to gas

Used induction cooking

Hot water units on timer

ECO equipment selection

Deleted 4 equipment items

Image c/o Lend Lease



**Operating Carbon
Avoided
90,000 kg CO₂/a**

**Operating Cost
Avoided
~\$138,800/ 5 yrs**

15 w/m2 lighting 32% better than code.

Installed a more efficient deep fryer than initially selected

High performance dishwasher

Equipment on timers turn off after trade – dishwasher, coffee machine & boiling water unit



Image c/o Lend Lease

Case studies

13%
Annual savings

	Bank	Fast Food	Fashion	Bar	Cafe
C02 saved per annum	3,656	1,748	2,418	90,000	22,505
\$/m²/a SAVED	\$7	\$89	\$9	\$25	\$102
\$/a SAVED	\$3,275	\$8,770	\$4,180	\$6,735	\$4,100

Coffee Machine



Non-essentials



Non-perishables



Efficient equipment



Lighting

